

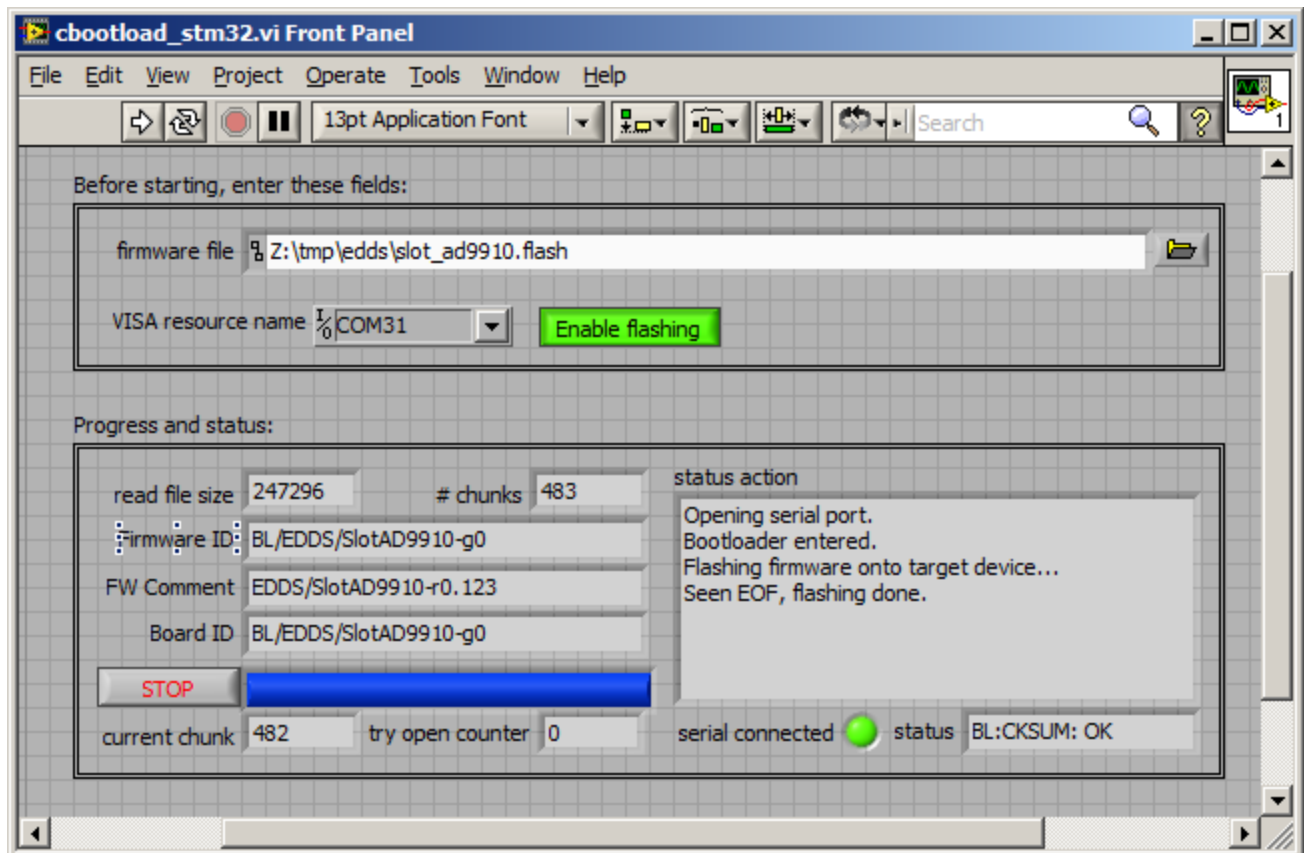
Installing Firmware Updates on the FlexDDS-NG DUAL via USB

The supplied LabView VI can be used for flashing new firmware onto the FlexDDS-NG DUAL via the USB.

Perform the following steps:



1. Launch the **cbootload_stm32.vi** (or open in LabView).
You need at least LabView 2010 (Version 10).
2. Locate the supplied *.flash file (e.g. flexdds_ng-ad9910_standalone.flash). Enter the path to this file in the box *firmware file* or choose the file interactively by pressing the *browse path* button to the right.
3. Connect the FlexDDS-NG via USB to the computer.
4. Make sure the FlexDDS-NG is powered up.
5. Select the correct COM port for the FlexDDS-NG at *VISA resource name*.
You can use the Windows Device Manager to identify that COM port.
6. Ensure that the button next to the COM port is pressed and green (*Enable flashing*).
7. Start the LabView program by hitting the LabView start/run button.



After starting the LabView program, it needs to activate the bootloader on the FlexDDS-NG. The program may tell you with a dialog window to reset the FlexDDS-NG via the red reset pushbutton. In this case, *first* press OK on the dialog and *then* reset the FlexDDS-NG.

The blue progress bar fills during the firmware update. The whole process takes less than 1 minute.

After a successful install, the program will show a dialog box notifying you of the successful install.